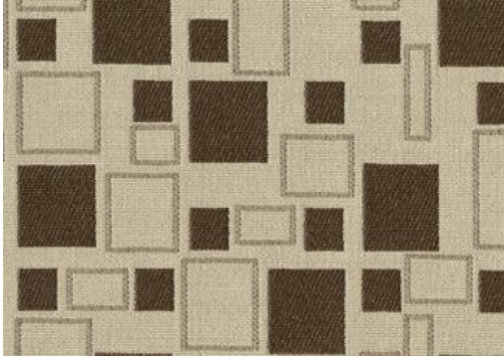


City Park



## Specifications:

|          |   |
|----------|---|
| content: | 100% Polyester                          |
| backing: | Synthetic latex blend                   |
| finish:  | none                                    |
| repeat:  | 7.25 in. / horizontal: 6 in. / vertical |
| weight:  | 16 oz / lin. yd. (506g/M)               |
| width:   | 54 inches                               |

## Flammability Passes:

California Tech. Bulletin #117-2013  
 UFAC Class 1  
 NFPA 260 class 1

## Performance:

|                      |  |
|----------------------|--|
| abrasion:            | Heavy Duty – Exceeds 50,000 cycles<br>(Wyzenbeek – Cotton duck Abradant) (ASTM D4157)  |
| light fastness:      | Class 4/40 hrs. min. (AATCC16A)  |
| color fastness:      | Class 5 (ASTM D3597, AATCC 8) Wet<br>Class 5 (ASTM D3597, AATCC 8) Dry   |
| physical properties: | Class 4 (ASTM D3511) Brush Pill<br>130 lbs. warp, 250 lbs. weft (ASTM D5034) Breaking Strength<br>65 warp, 47 lbs. weft (ASTM D4034) Seam Slippage |

made in: China

## Care &amp; Cleanability:

Cleaning code **W** - Spot clean only with water based upholstery shampoo or foam upholstery cleaner. Pretest a small, inconspicuous area before proceeding. Do not over wet. Do not use solvents to spot clean. Cushion covers should not be removed and laundered. When cleaning a spill, blot immediately to remove the spilled material. Evenly clean the entire panel in a seam to seam fashion. Do not clean just the spots or stains. When an overall soiled condition has been reached and professional care is required, contact an IICRC certified firm ([www.iicrc.org](http://www.iicrc.org)).